

# MetaTrieve™

*The only database search and query tool!*

## PROBLEM AND SOLUTION:

1. Among the greatest business bottlenecks and productivity-sinks for both IT personnel and general, information-seeking end-users is that associated with finding data in relational databases. This problem becomes even more pronounced when the database environment is widely distributed among distinct departmental implementations and with a plurality of vendor products over many platforms. The problem in “finding data” is not, however, only in querying specific information about a business entity (“What is Mary Smith’s address?”), but also finding where the data is located (database, table and column) in the first place (Where are my customer addresses?). *MetaTrieve* was developed for the express purpose of finally clearing this bottleneck and providing the many information-seeking users in virtually all departments throughout a company with a tool that allows them to easily and intuitively close the loop between being able to initially discover where data is located and then query the data once located.

2. Data discovery (the what, where and wherefore of data) is not only a prerequisite of querying, but is also the prime activity of B2B processes, data integration, consolidation and

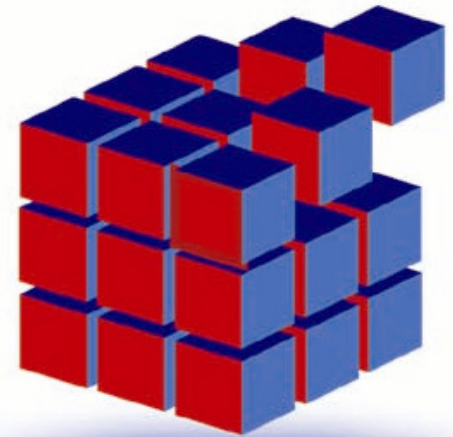
warehousing. XML vocabularies for B2B business processes such as purchase orders or shipment notifications pose an especially troublesome data discovery issue for companies—how to find and correlate internal database elements with XML document tags. Even with database browsers and catalogs, the problem of locating all of this information is huge. *MetaTrieve*, with its natural-language search engine and automatic XML-to-database matcher, helps locate all of the data elements destined for B2B processes, data integration and synchronization.

3. *MetaTrieve* is also a stand-alone query tool with the ability to perform cross-database table joins (e.g. join Oracle® and DB2® data into one display sheet) with an easy Google®-like find feature requiring no SQL knowledge. *MetaTrieve* also shows data relationships between tables for further tracking and querying of company information. In addition, with display and load options for Microsoft® Excel® and Access®, *MetaTrieve* further enhances the total data analysis and reporting process.

4. With [Search](#) and [Query](#) features together with the [XML Matcher](#) and [Cross-Database Join](#), *MetaTrieve* frees you from dependency on “data experts” and empowers you to find the information you need. And your company gains from corporate-wide productivity in enterprise data retrieval.

# MetaTrieve™

## DATABASE SEARCH ENGINE AND QUERY TOOL



*Finding Data, Freeing Time! Freeing Data, Finding Time!*

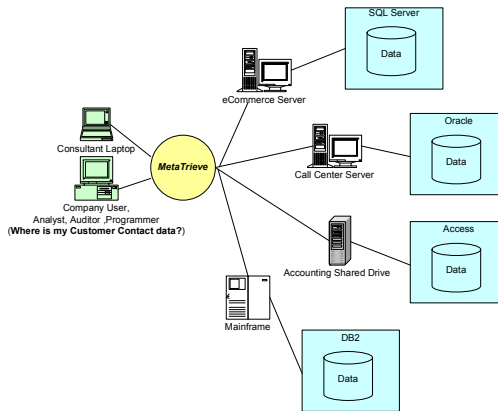
## and “MetaX™”

*MetaTrieve* is also available as an embeddable search engine ActiveX component for integration into other database query, reporting and enterprise search software products.

# HOW METATRIEVE WORKS

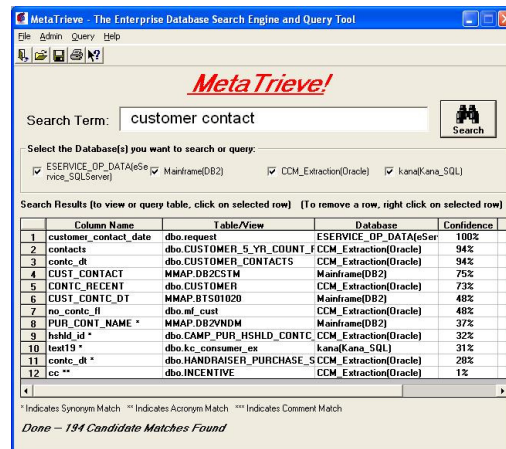
1. As depicted in schematic **A**, starting with a simple business search term (e.g. “customer contact”), *MetaTrieve* searches the entire company enterprise metadata for database objects (tables and column) that match the meaning of the search term. In effect, *MetaTrieve* answers business questions like “Where is my customer contact data located?”, so an information user can then easily query the actual information.

A.



2. Next, as shown in GUI screenshot **B**, the results of the search are displayed in a sheet. The location (database, table and column) of customer contact data (in all manner of semantic and format variations) is retrieved readily from the simple search request. Now a simple query is only a row-click away. No longer do users need to pore through table listings, browse through volumes of table displays or query catalogs and data dictionaries. *MetaTrieve* turns an oft tedious process into an easy two-click method.

B.



*Finding Data, Freeing Time/ Freeing Data, Finding Time!*

[www.metatrieval.com](http://www.metatrieval.com)

“MetaTrieve,” “MetaX” and “MetaTrieval Software” are Trademarks and property of MetaTrieval Software, LLC

## Features:

- Unique database metadata natural language search engine.
- One-click database, table and column locate.
- Cross-Database joins.
- Related data displays.
- Excel and Access integration.
- Multiple database and table display windows.
- Enterprise-wide single search.
- Easy find without SQL.
- XML Tag matching.

## System Requirements:

Windows 98/Me/2000/NT/XP

128 RAM, 6M HD available free space

Microsoft® Word® (if synonym search is desired); Microsoft® Excel® and Access®, if desired for display and conversion)

ODBC drivers for desired databases